

**All items should be clearly labelled with the pupil's name.**

Long hair must be tied back at all times with a red or navy hair band. No nail varnish. No jewellery except small stud earrings, which must be removed for swimming, PE, games and clubs.

House colours: **HOBSON (green)** **MALCOLMSON (blue)** **OSMOND (yellow)** **SEARLE (red)**

## Green Shoots & Kindergarten

Red sweatshirt with school logo\*  
Navy jersey/cotton leggings/jogging bottoms  
Grey skirt\* and tights (*KG only, if preferred*)  
White short-sleeve polo shirt  
Coat, scarf, gloves and hat (*any colour*)  
as weather requires  
Closed-toe shoes (*any colour*)  
RSM logo navy rucksack\* (*KG only, two sizes available*)  
Red striped summer dress\* (*summer*)  
Red/white cycling shorts (*optional to be worn under summer dress*)

Wellies (*any colour*)  
Waterproof jacket  
Winter coat  
Kukri House T-shirt (*KG only*)  
Navy shorts  
White socks (*no tights with summer dress*)  
RSM logo red sun cap\* (*legionnaire style preferred*)  
Waterproof trousers  
RSM drawstring bag in House colour\*

## Reception

Red sweatshirt with school logo\*  
Grey pleated skirt/grey trousers\* (*winter*)  
White short-sleeve polo shirt  
Grey socks/tights (*winter*)  
Black leather/patent shoes (*Velcro fastening*)  
Navy, black or red scarf and gloves  
Red striped summer dress\*/grey shorts (*summer*)  
Red/white cycling shorts (*optional to be worn under summer dress*)

White socks (*no tights with summer dress*)  
RSM logo winter beanie hat\* (*as weather requires*)  
Plain navy coat or school cagoule with zip-in fleece\*  
Art overall\*  
RSM logo navy rucksack (*larger size*)\*  
Navy waterproof trousers  
Wellies  
RSM drawstring bag in House colour\*

## Years 1–6

RSM school blazer\*  
House tie\*  
Red v-neck cardigan/sweater\*  
Grey pleated skirt/grey trousers\* (*winter*)  
White shirt (*long or short sleeve*)  
Grey socks/tights (*winter*)  
Black leather/patent shoes (*no embellishments*)  
Red striped summer dress\*/grey shorts (*summer*)  
White socks (*no tights*) with summer dress (*summer*)  
Red/white cycling shorts (*optional to be worn under summer dress*)

RSM logo navy school rucksack (*larger size*)\*  
Navy, black or red scarf and gloves  
RSM logo winter beanie hat\* (*as weather requires*)  
Plain navy coat or school cagoule with zip-in fleece\*  
RSM drawstring bag in House colour\*

## Years 1 & 2 only

Art overall\*  
Navy waterproof coat, trousers and wellies of any colour (*Forest School*)

**All items should be clearly labelled with the pupil's name.**

Long hair must be tied back at all times with a red or navy hair band. No nail varnish. No jewellery except small stud earrings, which must be removed for swimming, PE, games and clubs.

House colours: **HOBSON (green)** **MALCOLMSON (blue)** **OSMOND (yellow)** **SEARLE (red)**

## Reception

RSM drawstring bag in House colour\*  
Navy shorts\*  
Kukri RSM House sports top\*  
Navy jersey tracksuit trousers  
RSM logo navy school hoodie\*  
Trainers with Velcro fastening (*for outdoor use*)  
RSM logo red school sun cap\*

### Swimming Kit

Navy swimming costume/trunks (*not shorts*)\*  
Towel  
Drawstring (House colour) swimming bag\*  
Navy swimming hat

## Years 1 & 2

RSM drawstring bag in House colour\*  
Navy shorts\*  
Kukri RSM House sports top\*  
RSM school hoodie\*  
Navy jersey tracksuit trousers  
Trainers with good grip (*for outdoor use*)  
Trainers with non-marking soles (*for indoor use*)  
White ankle stocks  
Trainer bags for outdoor trainers (*optional for Year 1*)

Football boots (*Year 2 only and optional*)  
Shin pads (*Year 2*)  
RSM logo red school sun cap\*

### Swimming Kit

Navy swimming costume/trunks\*  
Towel  
Drawstring (House colour) swimming bag\*  
Navy swimming hat

## Years 3–6

### Hockey/Rugby/Netball/Football/Cricket Kit

Kukri RSM tracksuit top\*  
Kukri RSM tracksuit bottoms\*  
Kukri RSM games top\*  
Kukri RSM reversible rugby top\*  
Kukri RSM navy skort\*  
Kukri RSM navy PE shorts\* (*used for games and PE*)  
Kukri RSM navy rugby shorts\*  
Kukri RSM white cricket top\*  
Kukri RSM white cricket trousers\* (*hardball only*)  
Trainers with good grip  
RSM logo trainer bag for outdoor trainers\*  
Trainers with non-marking soles (*for indoor use*)  
RSM logo red school sun cap\*  
Kukri blue and white striped playing socks\*  
(*hockey/football/rugby*)  
Football boots  
Mouthguard (*hockey/rugby*)  
Shin pads (*hockey/football*)  
White ankle socks (*netball/cricket*)

### Optional

Rugby boots  
Astro boots  
Kukri RSM blast fleece\*  
Kukri RSM navy rain jacket\*  
Kukri RSM white sleeveless cricket jersey\*

### PE Kit

Kukri RSM House sports top\*  
White ankle socks  
Kukri RSM navy PE shorts\* (*used for games and PE*)  
Kukri RSM base layer (*top and bottom*)\*

### Swimming Kit (on rotation)

Navy swimming costume/trunks\*  
Towel  
Drawstring (House colour) swimming bag\*  
RSM logo navy swimming hat\*





# ✦ KUKRI



RSM Playing Socks



RSM Games Top



RSM Rugby Shorts



RSM Navy PE Shorts



RSM Tracksuit Top



RSM Tracksuit Bottoms



RSM Navy Skort



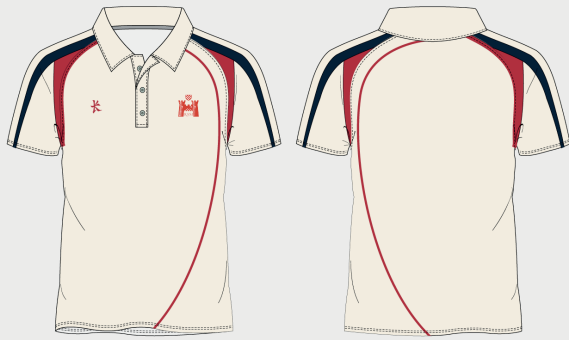
RSM Reversible Rugby Top



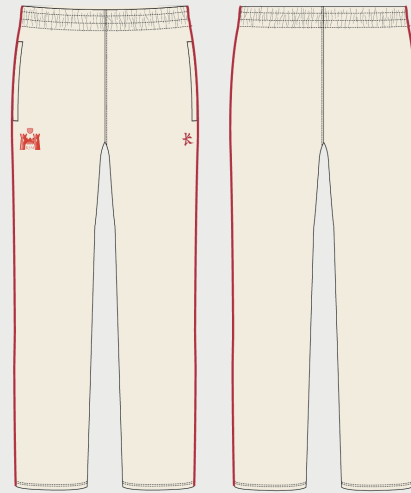
RSM Blast Fleece – OPTIONAL



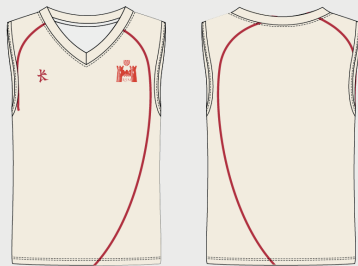
RSM Navy Rain Jacket – OPTIONAL



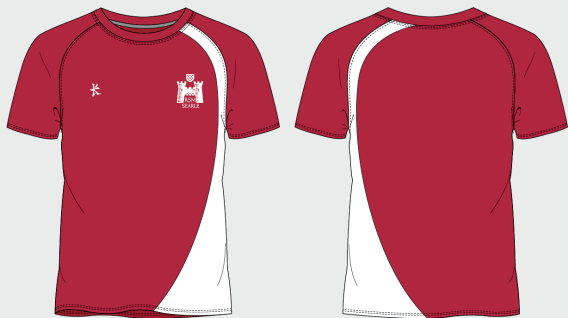
RSM White Cricket Top



RSM White Cricket Trousers  
(Hardball Cricket)



RSM White Sleeveless Cricket Jersey – OPTIONAL



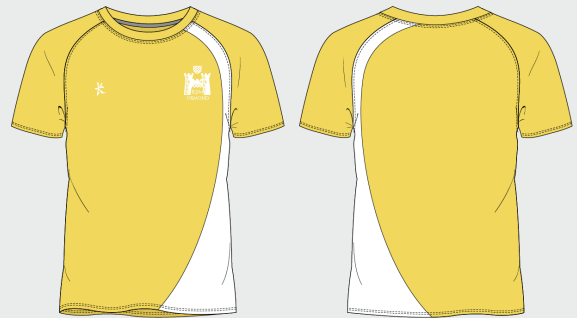
RSM House Sports Top Searle



RSM House Sports Top Malcolmson



RSM House Sports Top Hobson



RSM House Sports Top Osmond