

**All items should be clearly labelled with the pupil's name.**

Long hair must be tied back at all times with a red or navy hair band. No nail varnish. No jewellery except small stud earrings, which must be removed for swimming, PE, games and clubs.

House colours: **HOBSON (green)** **MALCOLMSON (blue)** **OSMOND (yellow)** **SEARLE (red)**

## Green Shoots & Kindergarten

Red sweatshirt with school logo*	Wellies (any colour)
Navy jersey/cotton leggings/jogging bottoms	Waterproof jacket
Grey skirt* and tights (KG only, if preferred)	Winter coat
White short-sleeve polo shirt	Kukri House T-shirt (KG only)*†
Coat, scarf, gloves and hat (any colour) as weather requires	Navy shorts
Closed-toe shoes (any colour)	White socks (no tights with summer dress)
RSM logo navy rucksack* (KG only, two sizes available)	RSM logo red sun cap* (legionnaire style preferred)
Red striped summer dress* (summer – optional)	Waterproof trousers
Red/white cycling shorts (optional to be worn under summer dress)	RSM drawstring bag in House colour*

## Reception

Red sweatshirt with school logo*	White socks (no tights with summer dress)
Grey pleated skirt/grey trousers* (winter)	RSM logo winter beanie hat* (as weather requires)
White short-sleeve polo shirt	RSM cagoule with zip-in fleece*
Grey socks/tights (winter)	Art overall*
Black leather/patent shoes (Velcro fastening)	RSM logo navy rucksack (larger size)*
Navy, black or red scarf and gloves	Navy waterproof trousers
Red striped summer dress* (summer – optional) /grey shorts (summer)	Wellies
Red/white cycling shorts (optional to be worn under summer dress)	RSM drawstring bag in House colour*

## Years 1–6

RSM school blazer*	RSM logo navy school rucksack (larger size)*
House tie*	Navy, black or red scarf and gloves
Red v-neck cardigan/sweater*	RSM logo winter beanie hat* (as weather requires)
Grey pleated skirt/grey trousers* (winter)	RSM cagoule with zip-in fleece* or Kukri navy rain jacket†
White shirt (long or short sleeve)	RSM drawstring bag in House colour*
Grey socks/tights (winter)	
Black leather/patent shoes (no embellishments)	
Red striped summer dress* (summer – optional) /grey shorts (summer)	<b>Years 1&amp;2 only</b>
White socks (no tights) with summer dress (summer)	Art overall*
Red/white cycling shorts (optional to be worn under summer dress)	Navy waterproof coat, trousers and wellies of any colour (Forest School)



**All items should be clearly labelled with the pupil's name.**

Long hair must be tied back at all times with a red or navy hair band. No nail varnish. No jewellery except small stud earrings, which must be removed for swimming, PE, games and clubs.

House colours: **HOBSON (green)** **MALCOLMSON (blue)** **OSMOND (yellow)** **SEARLE (red)**

## Reception

RSM drawstring bag in House colour\*  
Navy shorts\*  
Kukri RSM House sports top\*†  
Navy jersey tracksuit trousers  
RSM logo navy school hoodie\*  
Trainers with Velcro fastening (*for outdoor use*)  
RSM logo red school sun cap\*

### Swimming Kit

Navy swimming costume/trunks (*not shorts*)\*  
Towel  
Drawstring (House colour) swimming bag\*  
Navy swimming hat

## Years 1 & 2

RSM drawstring bag in House colour\*  
Navy shorts\*  
Kukri RSM House sports top\*†  
RSM school hoodie\*  
Navy jersey tracksuit trousers  
Trainers with good grip (*for outdoor use*)  
Trainers with non-marking soles (*for indoor use*)  
White ankle socks  
Trainer bags for outdoor trainers (*optional for Year 1*)

Football boots (*Year 2 only and optional*)  
Shin pads (*Year 2*)  
RSM logo red school sun cap\*

### Swimming Kit

Navy swimming costume/trunks\*  
Towel  
Drawstring (House colour) swimming bag\*  
Navy swimming hat

## Years 3–6

### Hockey/Rugby/Netball/Football/Cricket Kit

Kukri RSM tracksuit top\*†  
Kukri RSM tracksuit bottoms\*†  
Kukri RSM games top\*†  
Kukri RSM reversible rugby top\*†  
Kukri RSM navy skort\*†  
Kukri RSM navy PE shorts\*† (*used for games and PE*)  
Kukri RSM navy rugby shorts\*†  
Kukri RSM white cricket top\*†  
Kukri RSM white cricket trousers\*† (*hardball only*)  
Trainers with good grip  
RSM logo trainer bag for outdoor trainers\*  
Trainers with non-marking soles (*for indoor use*)  
RSM logo red school sun cap\*  
Kukri blue and white striped playing socks\*†  
(*hockey/football/rugby*)  
Football boots  
Mouthguard (*hockey/rugby*)  
Shin pads (*hockey/football*)  
White ankle socks (*netball/cricket*)

### Optional

Rugby boots  
Astro boots  
Kukri RSM blast fleece†  
Kukri RSM navy rain jacket†  
Kukri RSM white sleeveless cricket jersey†

### PE Kit

Kukri RSM House sports top\*†  
White ankle socks  
Kukri RSM navy PE shorts\*† (*used for games and PE*)  
Skins base layer (*top and bottom*)

### Swimming Kit (on rotation)

Navy swimming costume/trunks\*  
Towel  
Drawstring (House colour) swimming bag\*  
RSM logo navy swimming hat\*



# ✦ KUKRI



RSM Playing Socks



RSM Games Top



RSM Rugby Shorts



RSM Navy PE Shorts



RSM Tracksuit Top



RSM Tracksuit Bottoms



RSM Navy Skort



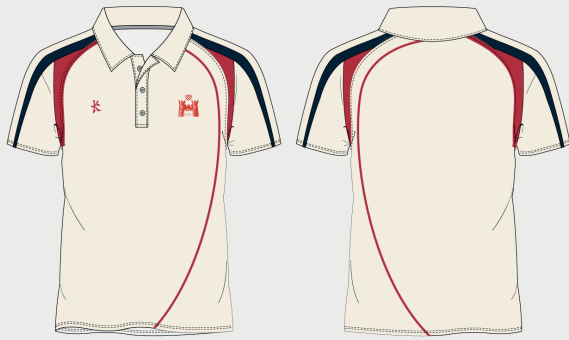
RSM Reversible Rugby Top



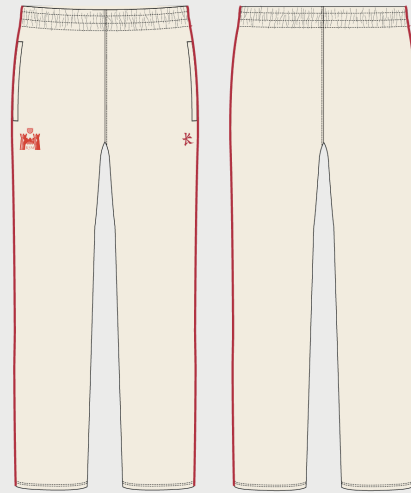
RSM Blast Fleece – OPTIONAL



RSM Navy Rain Jacket – OPTIONAL



RSM White Cricket Top



RSM White Cricket Trousers  
(Hardball Cricket)



RSM White Sleeveless Cricket Jersey – OPTIONAL



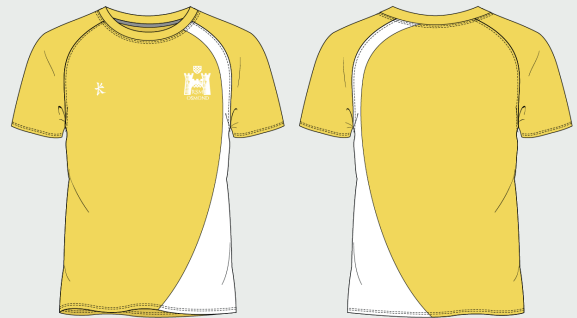
RSM House Sports Top Searle



RSM House Sports Top Malcolmson



RSM House Sports Top Hobson



RSM House Sports Top Osmond